



MCS58

- Reach: 2m to 10m20
- Built-in wear-resistant compression spring:
> 3.000.000 movements
- Adjustable movement speed
- Master/slave
- Up to 5 year warranty
- Custom-made and delivered ready for installation

PARTS

Barrier box

- Dimension: 450 W x 440 D x 1100 H
- Parts: folded and welded steel plate (3mm) with internal reinforcement (up to 12mm), an access door, a removable cover and a base plate (6mm)
- Removable cover runs diagonally upwards to the center
- Pivot points are mounted with bearings and tension ring mounts

Barrier arm

- Round aluminium tube (Ø 90mm) with a plug at both ends or oval barrier arm (175 x 100mm)
- Red reflective strips (330 x 90mm) are applied to both sides
- Balanced by a wear-resistant compression spring (> 3.000.000 movements)
- 3 types:
 - Type R = right-hand mounted barrier arm
 - Type L = left-hand mounted barrier arm
 - Type C = centrally mounted barrier arm
- Secured by 4 (R, L) or 3 (C) stainless steel bolts which makes the barrier arm easy to replace

FINISHING

- Surface treatment: blasted and metallized
- Finished off with a thermo-hardened polyester coating

OPENING

- Type S (fast): 4,2 sec (max. barrier arm length = 4000mm)
- Type N (normal): 6,9 sec (max. barrier arm length = 6000mm)
- Type T (slow): 8,2 sec (max. barrier arm length = 10000mm)

SAFETY

Emergency release accessible through the access door at the front of the barrier box. When the door is opened, a circuit breaker prevents the barrier from opening automatically. The barrier can be opened manually using the emergency crank (found on the connecting rod).

Emergency crank (optional)

When the emergency crank is used, the current is automatically interrupted by a limit switch that is in contact with the motor gearbox. To use the emergency crank, swivel the cover on the right side of the barrier box.

MECHANISM

Drive

Single bearing intermediate shaft (45mm) is driven by a single-phase gear motor using a crankshaft-connecting rod mechanism to the single bearing output shaft (45mm). This mechanism ensures a fluent movement when opening or closing and is locked in both end positions.

Durability

Slip action clutch in the gear unit ensures a safe ratio between the torque exerted and the torque required. By combining the favourable power factor (1,2) and this clutch, the gear unit is maintenance-free.

Control system

Built-in FEIG WU-A-BOR frequency drive microcontroller is suitable for a wide range of applications (such as 3-push button, switch pulse, start with automatic closing, loop start,...) and is supplied with a magnetic motor safety switch. This control system prevents slipping in the slip-action clutch, which makes it maintenance-free. Microcontroller can be connected to and managed by other home management or domotic systems with additional communication software.

Operating temperature

The MCS58 has an operating temperature of -5°C to 50°C. With the optional heating mat, the operating temperature increases to -30°C to 50°C.

TECHNICAL INFORMATION



1 Door switch	
2 Upper shaft	
3 Control + motor capacitor	FEIG-WU-A-BOR
Power supply	230 VAC
Frequency	50 Hz
Power usage	30 Watt
4 Motor gearbox with internal slip clutch	
Power supply	230 VAC
Frequency	50 Hz
Power usage	370 Watt
Cosinus Phi	0.94
5 Connecting rod	
6 Terminal strip	
7 Balance spring	Max. 2
8 Limit switches	
9 Bottom shaft	
10 Simplex chain	

Position of the barrier arm



Left

Right

Central

Dimensions barrier box	450 x 440 x 1100mm (WxDxH)
Parts barrier box	Folded and welded steel plate (3mm) with internal reinforcement up to 12mm, access door,removable lid, base plate (6mm)
Ø boom barrier arm	90mm
Opening speed	*without options
Type F	4,2 sec (max. barrier arm length= 4000mm)
Type N	6,9 sec (max. barrier arm length= 6000mm)
Type S	8,2 sec (max. barrier arm length= 10000mm)
Control	Relay control
Operating temperature	-5°C to 50°C
Options	
Frequency control	
Emergency crank	
Potential-free contact of the limit switches in the clamping strip	
Maritime coating	
Stainless steel	
Bottom skirt (opening speed type S)	To 7000mm
Top and bottom skirt (opening speed type S)	To 6000mm

ACCESSORIES

Barrier arm



Barrier arm break away



LED-lighting

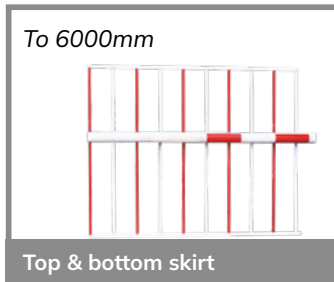


Safety strip



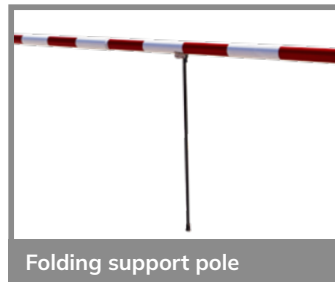
To 7050mm

Bottom skirt



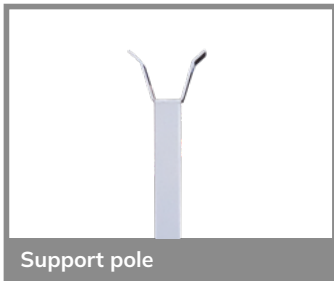
To 6000mm

Top & bottom skirt

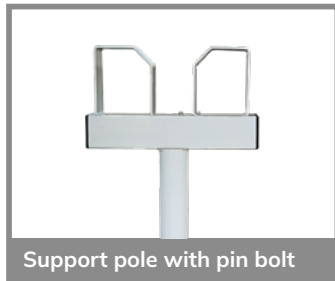


Folding support pole

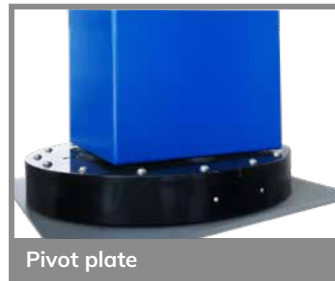
General



Support pole



Support pole with pin bolt



Pivot plate



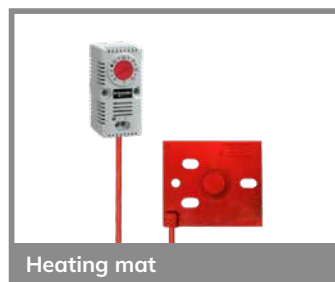
Laser sensor - horizontal



Laser sensor - vertical



Photo cell



Heating mat



Loop detector - Bircher/FEIG



**/ YOUR SAFE PARTNER
IN ACCESS**

info@bambormet.be

+32 11 31 26 56

Ambachtstraat 1137,
B-3850 Nieuwerkerken
Belgium

bambormet.be